

# GOLD STANDARD PASSPORT

## GOLD STANDARD PASSPORT

### CONTENTS



- A. Project title**
- B. Project description**
- C. Proof of project eligibility**
- D. Unique Project Identification**
- E. Outcome stakeholder consultation process**
- F. Outcome sustainability assessment**
- G. Sustainability monitoring plan**



- H. Additionality and conservativeness deviations**



- Annex 1 ODA declarations**

# GOLD STANDARD PASSPORT

## SECTION A. Project Title

**Greater Accra Improved Cook Stoves**

## SECTION B. Project description

Estimated start date of construction: February 2011

This project will involve the distribution of approximately 2500 energy efficient stoves in Ga East, West Akim and Akwapim South Districts, Ghana.

Deforestation rates in Ghana are amongst the highest in Africa; approximately 1.8% per year. The impact of deforestation is widespread, affecting the livelihoods of local people, disrupting important environmental functions and severely destroying the original forest ecosystem. There is a serious concern in Ghana about climatic change and soil erosion and large-scale desertification. The exploitation of wood resources has resulted in the decline of several preferred wood fuel species. The use of traditional stoves with its associated problems of indoor air pollution and fire hazards also affects the health of the rural population.

The co2balance project in the region will be attempting to address some of these issues. We will be distributing our energy efficient stoves into several domestic households that would normally cook using traditional inefficient stoves. The stoves will be constructed, distributed and installed by local people under the guidance of co2balance UK Ltd. These stoves will utilise the efficient rocket technology which initial testing has shown to be about 50% more efficient than traditional 3-stone fires. These stoves will use less firewood and emit less smoke, which will reduce daily firewood costs and illness caused by smoke inhalation.

The distribution of efficient stoves will result in greenhouse gas emissions reductions associated with the combustion of firewood derived from non-renewable sources.

In addition to reducing greenhouse gas emissions, this project will contribute towards important sustainable development benefits including:

- Reduced deforestation and degradation of surrounding forests, as less wood will be needed to cook;
- Enhanced energy security by cutting down on the amount of firewood used in cooking
- Reduced poverty, as the efficient wood stove reduces annual expenditure on cooking fuels;
- Reduced adverse health effects associated with indoor air pollution (particulate matter inhalation from the smoke due to the purpose-built stove design).
- Reduced cooking and wood collection time which could be used for other economically viable projects to benefit the household;
- Increased environmental awareness and community integration.







# GOLD STANDARD PASSPORT

## SECTION C. Proof of project eligibility

### C.1. Scale of the Project

[See Toolkit 1.2.a]

Please tick where applicable:

Project Type	Large	Small
	<input type="checkbox"/>	<input type="checkbox"/>
	<input type="checkbox"/>	<input type="checkbox"/>
	<input type="checkbox"/>	<input type="checkbox"/>
	<input type="checkbox"/>	<input type="checkbox"/>
	<input type="checkbox"/>	<input type="checkbox"/>
		X

### C.2. Host Country

Republic of Ghana

# GOLD STANDARD PASSPORT

## C.3. Project Type

Please tick where applicable:

Project type	Yes	No
Does your project activity classify as a Renewable Energy project?	<input type="checkbox"/>	<b>x</b>
Does your project activity classify as an End-use Energy Efficiency Improvement project?	<b>x</b>	<input type="checkbox"/>

Please justify the eligibility of your project activity:

This project will introduce energy efficient cook stoves into the Ga East, West Akim and Akwapim South Districts Ghana and will reduce fuel use and associated greenhouse gas emissions from non renewable biomass by end users. Other benefits will include contributions to local sustainable development issues such as deforestation and illnesses caused by smoke inhalation. This is in line with the stated aims of the GS.

The project will be classified as microscale, producing a total emissions reduction of less than 5000 tonnes CO<sub>2</sub>e/year . The project will be carried out in line with the Gold Standard methodology “Technologies and Practices to Displace Thermal Energy Consumption”. The project falls into the end-use energy efficiency improvement category, defined as the reduction in the amount of energy required for delivering or producing non-energy physical goods or services.

The project type eligibility is outlined in Annex C of the gold standard methodology v2.1 under “Improved distributed heating and cooking devices (e.g. biodigesters, cook-stoves), and distributed micro-scale electricity generation units (e.g. micro hydro and PV for households)”.

Eligibility criteria:

“Project activities involving a large amount of small, distributed heating, cooking or electricity generation devices using renewable energy sources shall provide the Gold Standard with a clear description of the transfer of credits ownership all along the investment chain, and with proof that end users are aware of and willing to give up their rights on emission reductions.” Following free distribution of stoves, end users will be made aware that all credits generated will be transferred to co2balance and that in receiving the technology without payment they agree to this transfer. The project will reduce the production of carbon dioxide (CO<sub>2</sub>), methane (CH<sub>4</sub>) and nitrous oxide (N<sub>2</sub>O).

The project is located in Ghana, which is part of the OECD Development Assistance Committees’ ODA recipient list for low income countries; this project however will not be a recipient of any ODA. A signed declaration attesting to this will be provided during validation and will appear in the GS passport for this project.

Pre Announcement	Yes	No
Was your project previously announced?	<input type="checkbox"/>	<b>x</b>
Explain your statement on pre announcement		

## **GOLD STANDARD PASSPORT**

The project was conceived from the outset as a VER generating carbon offset activity with no other potential stream of revenue for its implementation – it follows that the project could not have been announced under this scenario.

# GOLD STANDARD PASSPORT

## C.4. Greenhouse gas

[See Toolkit 1.2.d]

<b>Greenhouse Gas</b>	
Carbon dioxide	<b>x</b>
Methane	<b>x</b>
Nitrous oxide	<b>x</b>

## C.5. Project Registration Type

[See Toolkit 1.2.f]

<b>Project Registration Type</b>	
Regular	<b>x</b>

Pre-feasibility assessment	Retroactive projects (T.2.5.1)	Preliminary evaluation (eg: Large Hydro or palm oil-related project) (T.2.5.2)	Rejected by UNFCCC (T2.5.3)
	<input type="checkbox"/>	<input type="checkbox"/>	<input type="checkbox"/>

If Retroactive, please indicate Start Date of Construction dd/mm/yyyy: Not Applicable

# GOLD STANDARD PASSPORT

## SECTION D. Unique project identification

### D.1. GPS-coordinates of project location

[See Toolkit 1.6]

	Coordinates
Latitude	5°47'38.88"N
Longitude	0°22'37.22"W



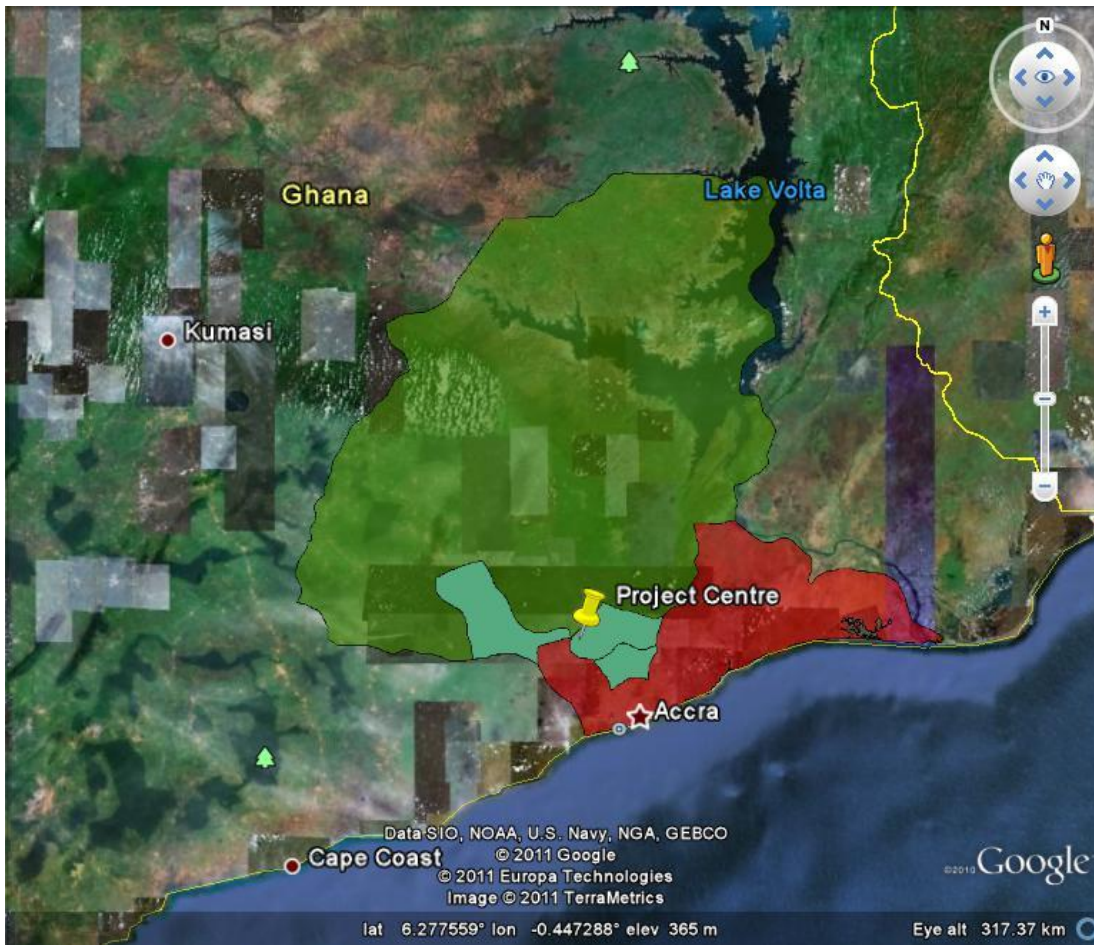
*Explain given coordinates*

A central coordinates for the project has been given, coordinates showing exact project areas are provided in the PDD.

### D.2. Map

# GOLD STANDARD PASSPORT

[See Toolkit 1.6]



# GOLD STANDARD PASSPORT

## SECTION E. Outcome stakeholder consultation process

### E.1. Assessment of stakeholder comments

Stakeholder comment	Was comment taken into account (Yes/ No)?	Explanation (Why? How?)
“I am not happy because the stove cannot be moved” (Feedback Form 27)	No	Stove design cannot be altered to be portable. Fixed stoves allow for accurate monitoring and control for the duration of the project.
“It is not moveable and is not made for commercial sellers” (Feedback Form 32)	No	Our stoves need to be fixed to ensure proper validation and verification for our monitoring process. This would allow transparency throughout the lifespan of the project. Our stoves are not catered for commercial sellers, as this would require a significant change in stove design. This is currently out of our project scope.
“The stove is too tall. And it can’t be moved” (Feedback Form 9 )	Yes	As explained above, the mobility of the stove cannot be adapted. However, the issue raised regarding the height of our current stove has been considered. Our new stove design – The CZ Stove – which will be rolled out within the community meets the height suggestions raised at the consultation.

# GOLD STANDARD PASSPORT

<p>“What I do not like about the stove is that one company will be the sole producer of the stove. “ (Feedback Form 8)</p>	<p>No</p>	<p>We are currently employing 1 local contractor as the quantity of stoves is still within the capacity of a sole contractor at this point in time. As with all our other projects, the rate of project expansion and the location of the communities determine the amount of contractors involved.</p>
--	-----------	---

## E.2. Stakeholder Feedback Round

Please describe report how the feedback round was organised, what the outcomes were and how you followed up on the feedback.

This is the first draft of the GS Passport for this project, produced prior to the SFR this document will be updated after the completion of the round.

## SECTION F. Outcome Sustainability assessment

### F.1. ‘Do no harm’ Assessment

## GOLD STANDARD PASSPORT

Safeguarding principles	Description of relevance to my project	Project risks	Mitigation measure
The project respects internationally proclaimed human rights including dignity, cultural property and uniqueness of indigenous people. The project is not complicit in Human Rights abuses.	<p>The proposed project does not violate this principle.</p> <p>We will adhere to the host country's commitment to UN conventions on Human Rights:</p> <p>International Covenant on Economic, Social and Cultural Rights, Ratification 07.07.2000<sup>1</sup></p> <p>International Covenant on Civil and Political Rights Ghana's Ratification 07.07.2000<sup>1</sup></p>	Low (all parties involved are traceable reputable enterprises)	The project would not violate this principle. Similar projects conducted in other countries have demonstrated that there are no violations on human rights.
The project does not involve and is not complicit in involuntary resettlement.	<p>The proposed project does not violate this principle.</p> <p>People have the right to chose in accordance with Article 1 of the International Covenant on Economic, Social and Cultural Rights, Ghana Ratification 07.07.2000, whether or not they want to use the stove technology<sup>2</sup></p>	Low (no party involved will be impacted by this principle)	There are no reasons to think the project could violate this principle, as proven in previous similar projects.
	The stove will not	Low (all parties)	There are no reasons to think the project could

<sup>1</sup> <http://www1.umn.edu/humanrts/research/ratification-ghana.html>

<sup>2</sup> <http://www2.ohchr.org/english/law/ccpr.htm>

## GOLD STANDARD PASSPORT

<p>The project does not involve and is not complicit in the alteration, damage or removal of any critical cultural heritage.</p>	<p>critically alter cooking practices; it is an improved technology of the same cooking method. Ghana's commitment to International Covenant on Economic, Social and Cultural Rights 07.07.2000<sup>3</sup> will ensure that this principle is not violated.</p>	<p>involved will not be significantly impacted by this principle)</p>	<p>violate this principle, as proven in previous similar projects undertaken in other countries.</p>
<p>The project respects the employees' freedom of association and their right to collective bargaining and is not complicit in restrictions of these freedoms and rights</p>	<p>The nature of this project does not violate this principle.</p> <p>Freedom of Association and protection of the Right to Organise Convention, Ratified 02.06.1965<sup>3</sup></p> <p>Right to Organise and Collective Bargaining Convention, Ratified 02.07.1959<sup>3</sup></p>	<p>Low (all parties involved will not be significantly impacted by this principle)</p>	<p>There are no reasons to think the project could violate this principle, as proven in previous similar projects undertaken in other countries.</p>
<p>The project does not involve and is not complicit in any form of forced or compulsory labour.</p>	<p>Possible forced or compulsory labour.</p> <p>However, co2balance will ensure all partners adhere to Article 8 a) of the International Covenant on Economic, Social and Cultural Rights, Ghana Ratification 07.07.2000<sup>4</sup></p> <p>As well as the:</p>	<p>Low (as all parties involved are traceable reputable enterprises)</p>	<p>This project would not significantly impact this principle. Manufacturing and distributing stoves involves employing local builders. Workers are formerly hired and ensured with working conditions in line to the national average.</p>

<sup>3</sup> <http://www1.umn.edu/humanrts/research/ratification-ghana.html>

<sup>4</sup> <http://www2.ohchr.org/english/law/ccpr.htm>

## GOLD STANDARD PASSPORT

	<p>Convention concerning Forced or Compulsory Labour Ratification 20.05.1957<sup>5</sup></p> <p>Abolition of Forced Labour Convention Ratification 15.12.1958<sup>5</sup></p>		
<p>The project does not employ and is not complicit in any form of child labour.</p>	<p>Possible child labour.</p> <p>However, Ghana is bound to the Convention of the Rights of the Child (CRC) Ratification 30.07.1990<sup>5</sup> and the African Charter on the Rights and Welfare of the Child. Signatory 18/08/97<sup>6</sup></p>	<p>Low (as all parties involved are traceable reputable enterprises)</p>	<p>Stove builders are reputable and do not make use of child labour. Proof of reputation will be delivered with the PDD (letter from all partners involved in the project)</p>
<p>The project does not involve and is not complicit in any form of discrimination based on gender, race, religion, sexual orientation or any other basis.</p>	<p>None of our project partners are involved in any discrimination.</p> <p>co2balance abides by the:</p> <p>Convention on the Elimination of All Forms of Discrimination against Women (CEDAW), Ratification 02.01.1986<sup>7</sup></p> <p>International Convention on the Elimination of All Forms</p>	<p>Low (all parties involved will not be significantly impacted by this principle)</p>	<p>There are no reasons to think the project could violate this principle, as proven in previous similar projects undertaken in other countries</p>

<sup>5</sup> <http://www1.umn.edu/humanrts/research/ratification-ghana.html>

<sup>6</sup> <http://www1.umn.edu/humanrts/instate/afchildratifications.html>

<sup>7</sup> <http://www1.umn.edu/humanrts/research/ratification-ghana.html>

## GOLD STANDARD PASSPORT

	of Racial Discrimination; Ratification 08..09.1966 <sup>7</sup>		
The project provides workers with a safe and healthy work environment and is not complicit in exposing workers to unsafe or unhealthy work environments.	<p>Possible exposure to hazardous chemicals in construction phase.</p> <p>Our project will adhere to I.H.O convention 155 – Occupational Safety and Health. We have noted that Ghana has no national policy on Occupational Health and Safety. A draft policy document prepared in 2004 has not been processed for adoption, even though article 4 of the I.H.O convention 155 – Occupational Safety and Health Convention, 1981 requires the nation to give effect to the provisions of this convention. Hence co2balance will take the initiative to ensure all workers work in a safe environment. Proof of this will be provided in the PDD<sup>8</sup></p>	Low (as all parties involved are traceable reputable enterprises)	All employees are appropriately trained in health and safety for the construction of stoves and handling of construction products. They are not exposed to unsafe or unhealthy work environments. Proof of this will be provided with the PDD (letter from all our project partners)
The project takes a precautionary approach in regard to environmental challenges and is not complicit in practices	The project alleviates environmental challenges. It decreases unsustainable harvesting of wood	Low (all parties involved will not be significantly	There are no reasons to think the project could violate this principle, as proven in previous similar projects undertaken in

<sup>8</sup> <http://erd.eui.eu/media/2010/Alfers-201006.pdf>

## GOLD STANDARD PASSPORT

<p>contrary to the precautionary principle.</p>	<p>from forests and the stove construction phase is conducted in a low impact manner.</p> <p>The project will adhere to Ghana's National Environmental Sanitation Policy (ESP), which covers all aspects of environmental health, and sets out responsibilities for the various stakeholders<sup>9</sup>.</p>	<p>impacted by this principle)</p>	<p>other countries</p>
<p>The project does not involve and is not complicit in significant conversion or degradation of critical natural habitats, including those that are (a) legally protected, (b) officially proposed for protection, (c) identified by authoritative sources for their high conservation value, or (d) recognized as protected by traditional local communities.</p>	<p>Ghana is ratified to the Convention on biodiversity 30.05.2003<sup>10</sup>. The nature of this project does not violate this principle. The project protects natural habitats by decreasing wood fuel harvesting from local forests.</p>	<p>Low (all parties involved will not be significantly impacted by this principle)</p>	<p>There are no reasons to think the project could violate this principle, as proven in previous similar projects undertaken in other countries</p>
<p>The project does not involve and is not complicit in corruption.</p>	<p>UN Convention against Corruption Ratification and Succession 27.06.2007<sup>11</sup></p> <p>co2balance screens project participants for</p>	<p>Low (all parties involved will not be significantly impacted by this</p>	<p>There are no reasons to think the project could violate this principle, as proven in previous similar projects undertaken in other countries</p>

<sup>9</sup> [http://wedc.lboro.ac.uk/docs/research/WEJEH/Briefing\\_Note\\_Ghana\\_-\\_National\\_sanitation\\_policy\\_in\\_Ghana\\_%28pdf%29.pdf](http://wedc.lboro.ac.uk/docs/research/WEJEH/Briefing_Note_Ghana_-_National_sanitation_policy_in_Ghana_%28pdf%29.pdf)

<sup>10</sup> <http://www.cbd.int/information/parties.shtml>

<sup>11</sup> <http://www.unodc.org/unodc/en/treaties/CAC/signatories.html>

## GOLD STANDARD PASSPORT

	corruption. We proceed on all our projects through formal and transparent methods.	principle)	
<b>Additional relevant critical issues for my project type</b>	<b>Description of relevance to my project</b>	<b>Assessment of relevance to my project (low, medium, high)</b>	<b>Mitigation measure</b>
None			
etc...			

# GOLD STANDARD PASSPORT

## F.2. Sustainable Development matrix

Indicator	Mitigation measure	Relevance to achieving MDG	Chosen parameter and explanation	Preliminary score
Gold Standard indicators of sustainable development	If relevant, copy mitigation measure from 'Do No Harm' assessment, and include mitigation measure used to neutralise a score of '-'	Check <a href="http://www.undp.org/mdg">www.undp.org/mdg</a> and <a href="http://www.mdgmonitor.org">www.mdgmonitor.org</a>  Describe how your indicator is related to local MDG goals	Defined by project developer	<p><u>Negative impact:</u> score '-' in case negative impact is not fully mitigated, score '0' in case impact is planned to be fully mitigated</p> <p><u>No change in impact:</u> score '0'</p> <p><u>Positive impact:</u> score '+'</p>
Air quality	None required	<p>MDG's: Promote gender equality and empower women (3), Reduce child mortality (4), Improve maternal health (5), and Ensure environmental sustainability (7).</p> <p>The improved stoves result in lower exposure levels and times to the selected parameters during cooking. This applies particularly to women and children who are most likely to be</p>	<p><i>Parameters: Total suspended particulate (TSPM) Respirable suspended particulate matter (RSPM)</i></p> <p>A reduction in non-renewable biomass fuel consumption will result in lower levels of CO<sub>2</sub> emissions in the atmosphere and lower levels of TSPM and RSPM in the household environment.</p> <p>Parameter would also be measured through kitchen surveys by asking householders whether or not they noticed a significant change in Air Quality.</p> <p>Investigations will be made into the practicality of monitoring brick production</p>	+

# GOLD STANDARD PASSPORT

		<p>affected by this.</p> <p>Reduced fuel consumption also leads to increased land area cover by forest and reduced CO<sub>2</sub> emissions</p>	<p>emissions; this will be discussed in detail in the PDD.</p>	
Water quality and quantity	None required	<p>MDG: Ensure environmental sustainability (7)</p> <p>The reduction in wood required for cooking will reduce unsustainable harvesting of surrounding forests, contributing to environmental sustainability.</p>	<p><i>Parameter: Water quality and quantity</i></p> <p>Fresh water resources of Ghana are at risk because of High rates of logging, fuel wood extraction, and poor agricultural practices.</p> <p>It is expected that avoided deforestation will lead to reduced soil erosion and hence reduced pollution of local water courses. However, this indicator is difficult to measure so it scores a neutral zero.</p>	0
Soil condition	None required	<p>MDG: Ensure environmental sustainability (7)</p> <p>The ongoing unsustainable management of the soils of Ghana leads to rapid erosion, loss of fertility, loss of productive capacity, desertification and scarcity of fresh water resources</p> <p>The reduction in wood required for cooking will reduce unsustainable harvesting of surrounding forests.</p>	<p><i>Parameter: Soil erosion and Organic matter content.</i></p> <p>The organic content of soil is a buffer against erosion. Reduced removal of wood will result in reduced soil erosion and an increase in soil organic matter. However, this indicator may prove difficult to measure and monitor so it scores a neutral zero.</p>	0

## GOLD STANDARD PASSPORT

Other pollutants	None required	<p>MDG: Ensure environmental sustainability (7)</p> <p>There is no evidence to suggest that the project will be related to any other pollutants.</p>	<p><i>Parameter: none needed as score is neutral.</i></p> <p>There is no evidence to suggest that the project will relate to any other pollutants</p>	0
Biodiversity	None required	<p>MDG: Ensure environmental sustainability (7)</p> <p>It is assumed that the reduction in wood consumption will reduce pressures on existing habitats, leading to increased biodiversity.</p>	<p><i>Parameter: Number of affected habitats.</i></p> <p>Biodiversity is under pressure because of competition for land, over exploitation of natural resources such as logging, forest and agriculture. Improved stoves will reduce fuel consumption as less firewood will be needed. This can indirectly lead to increased biodiversity as there will be less forest degradation. However, because this indicator is difficult to measure and monitor it scores a neutral zero.</p>	0
Quality of employment	None required	<p>MDG: End poverty &amp; hunger.</p> <p>Employment and training opportunities resulting from stove construction and maintenance and project monitoring will provide income to people in the area.</p>	<p><i>Parameter: Number of workshops organised, content and attendees. Working conditions during the project.</i></p> <p>Number of contracts/ people employed through the different phases of the project, and any skills/training they will have received to enable them to perform their jobs: We have redesigned our training courses to include lessons on effective communication, dialogue, conflict resolution and group work. Equipping people with these skills increases their confidence, ability to complete tasks and enhances productivity.</p>	+
Livelihood of the poor	None required	<p>MDG's: Eradicate extreme poverty &amp; hunger (1), Promote gender equality and empower women (3), Reduce child</p>	<p><i>Parameter: Wood Consumption, Wood Cost and time spent for wood collection.</i></p> <p>It has been shown that 'forest loss increases key health risks such as malaria',</p>	+

## GOLD STANDARD PASSPORT

		<p>mortality (4), Improve maternal health (5), Combat HIV/AIDS, malaria and other diseases (6)</p> <p>The reduction in wood required for cooking will result in less expenditure on cooking fuel. This also reduces dependence on an increasingly scarce resource. Reduced smoke exposure will benefit women and children, who are most usually present during cooking.</p>	<p>this project will contribute to reducing forest loss and thus the incidence of malaria.</p> <p>Through comparing the reduction in wood per household to the cost of wood it will be possible to calculate financial savings made by households.</p>	
Access to affordable and clean energy services	None required	<p>MDG: Eradicate extreme poverty &amp; hunger (1)</p> <p>The reduction in firewood required will result in lower expenditure on energy</p>	<p><i>Parameter: Change in volume of Traditional Fuel through wood consumption, wood cost and time spent for wood collection</i></p> <p>By measuring the direct parameters, we will prove the benefits from the project as it relates to more affordable energy (reduction in wood per household).</p>	+
Human and institutional capacity	None required	<p>MDG: Promote gender equality and women empowerment (3).</p> <p>The project will bring numerous benefits to women as there are in charge of the cooking tasks</p>	<p><i>Parameter: Internal project records to follow employment of wood sellers.</i></p> <p>It is not anticipated that there will be any changes in human and institutional capacity as a result of this project.</p>	0
Quantitative employment and income generation	Those individuals, (fuel sellers etc), that are likely to have their income affected will be employed for the duration of the	<p>MDG: End poverty &amp; hunger (1).</p> <p>The project will create jobs and generate income for those involved in</p>	<p><i>Parameter: Household income generated from employment created by the project using internal records.</i></p> <p>Approximately 35 people will be directly employed for the project (95% will be locals). The roles will involve data collection, data entry, stove manufacturers</p>	0

## GOLD STANDARD PASSPORT

	project. As a result we have given this a neutral score	stove production, distribution, installation, maintenance and project sampling.	and local mediators. Fuel sellers would be trained in stove construction; this would be reflected in employment records.	
Balance of payments and investment	None required	MDG: Develop a global partnership for development (6)  It is not anticipated that the project will have any impact balance of payments and investment.	<i>Parameter: none needed as score is neutral.</i>  It is not anticipated that the project will have any impact balance of payments and investment.	0
Technology transfer and technological self-reliance	None required	Eradicate extreme poverty & hunger (1), Ensure environmental sustainability (7)  The project will bring the wood efficient stove technology to the area, as well as new skills through capacity building.	<i>Parameter: Number of training workshops organised to teach individuals to build the stoves through internal records.</i>  Data Collectors Training: 10+ people. Stove construction Training: 30+ people are expected to be trained in stove construction during the duration of the project.  Our data collectors training will include sections on personal development group work, effective communication and positive self image. As a company, we are aware that the success of the project is determined by how content, effective and efficient the people involved in its implementation are.	+

# GOLD STANDARD PASSPORT

## SECTION G. Sustainability Monitoring Plan

[See Toolkit 2.4.3 and Toolkit Annex I]

No	1	
Indicator	Air Quality	
Mitigation measure	None	
<i>Repeat for each parameter</i>		
Chosen parameter 1.1	Total suspended particulate matter (TSPM) – measured indirectly by wood consumption	
Current situation of parameter	As determined by research (see table above) and field staff, traditional cooking methods produce large amounts of TSPM. It is not justifiable to measure this quantitatively but it will be measured qualitatively as described below.	
Estimation of baseline situation of parameter	The baseline is determined by the current situation.	
Future target for parameter	The project aims to reduce wood consumption and hence make a reduction in the defined parameter.	
Way of monitoring	How	Kitchen Performance Tests & Annual Surveys
	When	Biennially and annually, respectively
	By who	Expert surveying team
Chosen parameter 1.2	Respirable suspended particulate matter (RSPM) – measured indirectly by wood consumption	
Current situation of parameter	As determined by research (see table above) and field staff, traditional cooking methods produce large amounts of RSPM. It is not justifiable to measure this quantitatively but it will be measured	

## GOLD STANDARD PASSPORT

		qualitatively as described below.
Estimation of baseline situation of parameter		The baseline is determined by the current situation.
Future target for parameter		The project aims to reduce wood consumption and hence make a reduction in the defined parameter.
Way of monitoring	How	Kitchen Performance Tests & Annual Surveys
	When	Biennially and annually, respectively
	By who	Expert surveying team

No	2	
Indicator	Quality of employment	
Mitigation measure	None	
<i>Repeat for each parameter</i>		
Chosen parameter 2.1	Number of training workshops organised, number of attendees.	
Current situation of parameter	3	
Estimation of baseline situation of parameter	As defined by current situation.	
Future target for parameter	3	
Way of monitoring	How	Stove contractor records – collated
	When	Continuously
	By who	Project developer

No	3	
Indicator	Livelihood of the poor	
Mitigation measure	None	
<i>Repeat for each parameter</i>		
Chosen parameter	Wood consumption	
Current situation of parameter	Wood consumption is known to be high amongst the project area population	

## GOLD STANDARD PASSPORT

Estimation of baseline situation of parameter		As defined by current situation
Future target for parameter		It is anticipated that wood consumption amongst stove beneficiaries will be reduced by at least 50%
Way of monitoring	How	Kitchen Performance Tests & Annual Surveys
	When	Biennially and annually, respectively
	By who	Expert surveying team

No	4	
Indicator	Access to affordable and clean energy services	
Mitigation measure	None	
<i>Repeat for each parameter</i>		
Chosen parameter	Change in volume of traditional fuel consumption	
Current situation of parameter	Traditional fuel consumption (wood) is known to be high amongst the project area population	
Estimation of baseline situation of parameter	As defined by current situation	
Future target for parameter	It is anticipated that wood consumption amongst stove beneficiaries will be reduced by at least 50%	
Way of monitoring	How	Kitchen Performance Tests & Annual Surveys
	When	Biennially and annually, respectively
	By who	Expert surveying team

No	5	
Indicator	Technology transfer and self reliance	
Mitigation measure	None	
<i>Repeat for each parameter</i>		
Chosen parameter	Number of training workshops organised to teach people to build the stove	

## GOLD STANDARD PASSPORT

Current situation of parameter		9
Estimation of baseline situation of parameter		As defined by current situation
Future target for parameter		18
Way of monitoring	How	Stove contractor/project developer records – collated
	When	Continuously
	By who	Project developer

# GOLD STANDARD PASSPORT

## Additional remarks monitoring

### SECTION H. Additionality and conservativeness



This section is only applicable if the section on additionality and/or your choice of baseline does not follow Gold Standard guidance

# GOLD STANDARD PASSPORT

## H.1. Additionality

[See Toolkit 2.3]

Both the additionality and choice of the baseline follow GS guidance

# GOLD STANDARD PASSPORT

## H.2. Conservativeness

[See Toolkit 2.2]

# GOLD STANDARD PASSPORT

ANNEX 1 ODA declaration



[1 Discovery House, Cook Way, Bindon Road,  
Taunton, Somerset, TA2 6BJ  
t +44 (0)845 094 2620  
f +44 (0)1823 336 776  
enquiries@co2balance.com  
www.co2balance.com

**Date: 20/07/2011**

**Project reference: GS824**

**To: Gold Standard Foundation**

## **Declaration of Non-Use of Official Development Assistance by Project Owner**

As Project Owner of the above-referenced project, acting on behalf of all project participants, I now make the following representations:

### **I. Gold Standard Documentation**

I am familiar with the provisions of Gold Standard Documentation relevant to Official Development Assistance (ODA). I understand that the above-referenced project is not eligible for Gold Standard registration if the project receives or benefits from Official Development Assistance under the condition that some or all credits coming out of the project are transferred to the ODA donor country. I now expressly declare that no

# GOLD STANDARD PASSPORT

financing provided in connection with the above-referenced project has come from or will come from ODA that has been or will be provided under the condition, whether express or implied, that any or all of the credits [CERs, ERUs or VERs] issued as a result of the project's operation will be transferred directly or indirectly to the country of origin of the ODA.

## **II. Duty to Notify Upon Discovery.**

If I learn or if I am given any reason to believe at any stage of project design or implementation that ODA has been used to support the development or implementation of the project, or that an entity providing ODA to the host country may at some point in the future benefit directly or indirectly from the credits generated from the project as a condition of investment, I will make this known to the Gold Standard immediately.

## **III. Sanctions.**

I am fully aware that under Section 10 of the Gold Standard Terms and Conditions sanctions and damages may be incurred for the provision of false information related to Projects and/or Gold Standard credits.

Signed: 

Name: Suzanne Longworth

Title: Director

On behalf of: co2balance

# GOLD STANDARD PASSPORT