

GOLD STANDARD PASSPORT

GOLD STANDARD PASSPORT

CONTENTS



- A. Project title**
- B. Project description**
- C. Proof of project eligibility**
- D. Unique Project Identification**
- E. Outcome stakeholder consultation process**
- F. Outcome sustainability assessment**
- G. Sustainability monitoring plan**



- H. Additionality and conservativeness deviations**



- Annex 1 ODA declarations**

GOLD STANDARD PASSPORT

SECTION A. Project Title

Tanga Improved Cook Stoves

SECTION B. Project description

Estimated start date of construction: June 2012

This project will involve the distribution of approximately 20,000 energy efficient stoves within a number of wards in Mkinga, Tanga and Muheza Districts, in Tanga Region. Most families in the area use the traditional 3-stone cooking stove that produces a big fire and consumes large amounts of firewood. This means that a lot of time is spent collecting firewood that would be used otherwise for other developmental activities. The three stone fire also produces a lot of smoke which causes respiratory disease, particularly in women/girls who use it for cooking, but also in young children of both sexes and other people (e.g. the elderly) who spend a lot of time indoors. The use of this inefficient cooking method also has unintentional negative impacts on the environment surrounding local people.

The project will be attempting to address these issues by distributing energy efficient stoves to households in the Tanga Region that in the absence of this project would cook primarily using traditional inefficient firewood stoves. The Stove to be constructed is the Carbon Zero Stove (CZS) stove, that saves over 50% firewood as compared to the three stone stove. The stoves will be constructed, distributed and installed by local people under the guidance of co2balance Tanzania Ltd. These stoves will utilise the efficient rocket technology. These stoves will be using less firewood and emitting less smoke, which will reduce daily firewood costs and alleviate illness caused by smoke inhalation.

The distribution of efficient stoves will result in emissions reductions associated with the reduction of the production and combustion of firewood derived from unsustainable sources.

In addition to reducing greenhouse gas emissions, so contributing to the mitigation of climate change, this project will contribute towards local benefits that will enhance the air quality in the area due to the reduction of the atmospheric pollutants.

Besides the benefits stated above, the project will provide the following co-benefits:

- Reduced deforestation and degradation of surrounding forests, as less wood will be needed to cook

GOLD STANDARD PASSPORT

- Reduced soil erosion and nutrient loss as trees protect the land
- Reduced risk of flooding in hilly areas as trees and plants on slopes soak up rain
- Reduced poverty, as the efficient wood stove reduces annual expenditure on cooking fuels;
- Reduced adverse health effects associated with indoor air particulate matter inhalation from the smoke due to the purpose-built stove design.
- Reduced cooking and wood collection time, which will allow more time to attend other household tasks and supervise children
- Reduced risk of attacks on firewood collectors (mainly women) in the remote areas generally used for firewood collection
- Reduction in burns and injuries as the CZ stove is safer to cook on






GOLD STANDARD PASSPORT

SECTION C. Proof of project eligibility

C.1. Scale of the Project

[See Toolkit 1.2.a]

Please tick where applicable:

Project Type	Large	Small
	<input type="checkbox"/>	<input type="checkbox"/>
	<input type="checkbox"/>	<input type="checkbox"/>
	<input type="checkbox"/>	<input type="checkbox"/>
	<input type="checkbox"/>	x
	<input type="checkbox"/>	<input type="checkbox"/>

	
---	--

C.2. Host Country

Republic of Tanzania

GOLD STANDARD PASSPORT

C.3. Project Type

Please tick where applicable:

Project type	Yes	No
Does your project activity classify as a Renewable Energy project?	<input type="checkbox"/>	x
Does your project activity classify as an End-use Energy Efficiency Improvement project?	x	<input type="checkbox"/>

Please justify the eligibility of your project activity:

This project will introduce energy efficient cook stoves into the Tanga, Muheza and Mkinga Districts and will reduce fuel use and associated greenhouse gas emissions from non renewable biomass by end users. Other benefits will include contributions to local sustainable development issues such as deforestation and illnesses caused by smoke inhalation. This is in line with the stated aims of the GS.

The project will be classified as small scale, displacing thermal energy of < 180 GwH/annum . The project will be carried out in line with the Gold Standard methodology “Technologies and Practices to Displace Thermal Energy Consumption”. The project falls into the end-use energy efficiency improvement category, defined as the reduction in the amount of energy required for delivering or producing non-energy physical goods or services.

The project type eligibility is outlined in Annex C of the gold standard methodology v2.1 under “Improved distributed heating and cooking devices (e.g. biodigesters, cook-stoves), and distributed micro-scale electricity generation units (e.g. micro hydro and PV for households)”.

Eligibility criteria:

“Project activities involving a large amount of small, distributed heating, cooking or electricity generation devices using renewable energy sources shall provide the Gold Standard with a clear description of the transfer of credits ownership all along the investment chain, and with proof that end users are aware of and willing to give up their rights on emission reductions.” Following distribution of stoves, end users will be made aware that all credits generated will be transferred to co2balance and that in receiving the technology without payment they agree to this transfer. The project will reduce the production of carbon dioxide (CO₂), methane (CH₄) and nitrous oxide (N₂O).

The project is located in Tanzania, which is part of the OECD Development Assistance Committees’ ODA recipient list for low income countries; this project however will not be a recipient of any ODA. A signed declaration attesting to this will be provided during validation and will appear in the GS passport for this project.

Pre Announcement	Yes	No
Was your project previously announced?	<input type="checkbox"/>	x
Explain your statement on pre announcement		

GOLD STANDARD PASSPORT

The project was conceived from the outset as a VER generating carbon offset activity with no other potential stream of revenue for its implementation – it follows that the project could not have been previously announced under this scenario.

GOLD STANDARD PASSPORT

C.4. Greenhouse gas

[See Toolkit 1.2.d]

Greenhouse Gas	
Carbon dioxide	x
Methane	x
Nitrous oxide	x

C.5. Project Registration Type

[See Toolkit 1.2.f]

Project Registration Type	
Regular	x

Pre-feasibility assessment	Retroactive projects (T.2.5.1)	Preliminary evaluation (eg: Large Hydro or palm oil-related project) (T.2.5.2)	Rejected by UNFCCC (T2.5.3)
	<input type="checkbox"/>	<input type="checkbox"/>	<input type="checkbox"/>

If Retroactive, please indicate Start Date of Construction dd/mm/yyyy: Not Applicable

GOLD STANDARD PASSPORT

SECTION D. Unique project identification

D.1. GPS-coordinates of project location

[See Toolkit 1.6]

	Coordinates
Latitude	-4.944806°
Longitude	38.991097°



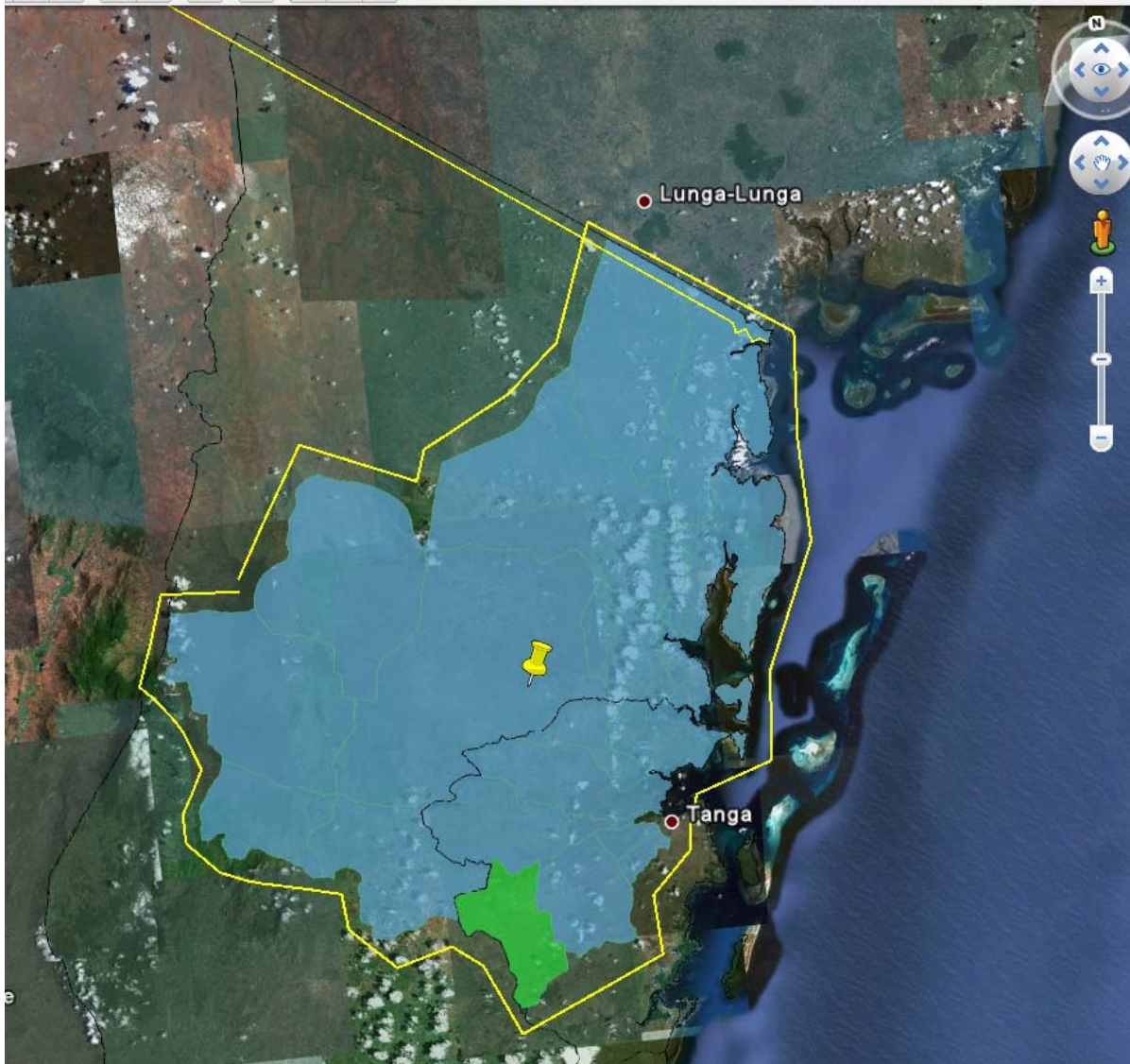
Explain given coordinates

A central coordinate for the project has been given; the exact project area is defined in the PDD in terms of political boundaries, also shown on the map.

GOLD STANDARD PASSPORT

D.2. Map

[See Toolkit 1.6]



GOLD STANDARD PASSPORT

SECTION E. Outcome stakeholder consultation process

E.1. Assessment of stakeholder comments

Stakeholder comment	Was comment taken into account (Yes/ No)?	Explanation (Why? How?)
Which kind of firewood is to be used any or specific meant just for this stove?	N	It was explained that any kind of firewood would do as long as it is dry
When will the construction begin?	N	Construction will start as soon as the head office gives the official Authorization to start.
What is the response of community members in other project areas? For instance Msambweni?	N	The response has been positive and people have embraced our project and are happy with it.
Can we be given more than one stove?	N	It was explained that at the moment we are only allowed to give one stove per household but we will consult with senior management.
Which criteria do you use to select a place for a feasibility study?	N	Jerome and Hamisi answered that sampling is usually done and villages with similar characteristics (e.g. demographics, cooking habits) are grouped together then representatives from both sides are chosen then with a go ahead from the UK office, the study is carried out.
Is your stove economical than the charcoal stove?	N	It was explained that the carbon zero stove was cheaper in the sense that it uses less firewood and hence less

GOLD STANDARD PASSPORT

		money to purchase firewood and firewood is cheaper than charcoal

E.2. Stakeholder Feedback Round

Please describe report how the feedback round was organised, what the outcomes were and how you followed up on the feedback.

This is the first draft of the GS Passport for this project, produced prior to the SFR this document will be updated after the completion of the round.

GOLD STANDARD PASSPORT

SECTION F. Outcome Sustainability assessment

F.1. 'Do no harm' Assessment

Safeguarding principles	Description of relevance to my project	Project risks	Mitigation measure
The project respects internationally proclaimed human rights including dignity, cultural property and uniqueness of indigenous people. The project is not complicit in Human Rights abuses.	<p>The proposed project does not violate this principle.</p> <p>We will adhere to the host country's commitment to: Universal Declaration of Human Rights (UDHR)</p> <p>International Covenant on Economic, Social and Cultural Rights, Tanzania Accession 11.6.76¹</p> <p>International Covenant on Civil and Political Rights Tanzania Accession 11.6.76²</p>	Low (all parties involved are traceable reputable enterprises)	The project would not violate this principle. Similar projects conducted in other countries have demonstrated that there are no violations on human rights.
The project does not involve and is not complicit in involuntary resettlement.	<p>The proposed project does not violate this principle.</p> <p>People have the right to chose whether they want the stove in accordance with Article 1 of the International Covenant on Economic, Social and Cultural Rights, Tanzania's Accession 11.6.76</p>	Low (no party involved will be impacted by this principle)	There are no reasons to think the project could violate this principle, as proven in previous similar projects undertaken in other countries.
The project does not involve and is not complicit in the alteration, damage	The stove will not critically alter cooking practices; it is an improved technology of the same cooking method.	Low (all parties involved will not be	There are no reasons to think the project could violate this principle, as proven in

¹ <http://www1.umn.edu/humanrts/research/ratification-tanzania.html>

² <http://www1.umn.edu/humanrts/research/ratification-tanzania.html>

GOLD STANDARD PASSPORT

or removal of any critical cultural heritage.	Tanzania's commitment to International Covenant on Economic, Social and Cultural Rights 11.6.76 will ensure that this principle is not violated	significantly impacted by this principle)	previous similar projects undertaken in other countries.
The project respects the employees' freedom of association and their right to collective bargaining and is not complicit in restrictions of these freedoms and rights	The nature of this project does not violate this principle. Right to Organise and Collective Bargaining Convention. Tanzania Ratified 30.1.62	Low (all parties involved will not be significantly impacted by this principle)	There are no reasons to think the project could violate this principle, as proven in previous similar projects undertaken in other countries.
The project does not involve and is not complicit in any form of forced or compulsory labour.	Possible forced or compulsory labour. However, co2balance will ensure all partners adhere to Article 8 a) of International Covenant on Economic, Social and Cultural Rights, Accession 11.6.76 ³	Low (as all parties involved are traceable reputable enterprises)	Manufacturing and distributing stoves involves employing local builders. Workers are formerly hired and ensured with working conditions in line to the national average.
The project does not employ and is not complicit in any form of child labour.	Possible child labour. However Tanzania is bound to the Convention on the Rights of The Child Accession 10.6.92 co2balance will ensure that all partners are compliant with rules set out.	Low (as all parties involved are traceable reputable enterprises)	Stove builders are reputable and do not make use of child labour. Proof of reputation will be delivered with the PDD (letter from all partners involved in the project)
The project does not involve and is not complicit	None of our project partners are involved in any	Low (all parties	There are no reasons to think the project

³ <http://www1.umn.edu/humanrts/research/ratification-tanzania.html>

GOLD STANDARD PASSPORT

<p>in any form of discrimination based on gender, race, religion, sexual orientation or any other basis.</p>	<p>discrimination</p> <p>co2balance abides by the:</p> <p>Convention on the Elimination of All Forms of Discrimination against Women (CEDAW), Tanzania Accession 30.08.85</p> <p>International Convention on the Elimination of All Forms of Racial Discrimination; Tanzania Accession 27.10.72</p>	<p>involved will not be significantly impacted by this principle)</p>	<p>could violate this principle, as proven in previous similar projects undertaken in other countries</p>
<p>The project provides workers with a safe and healthy work environment and is not complicit in exposing workers to unsafe or unhealthy work environments.</p>	<p>Possible exposure to hazardous chemicals in construction phase.</p> <p>co2balance would abide by Tanzania's Occupational Health and Safety Act, 2003 (No. 5).</p> <p>Cartagena Protocol on Biosafety. Ratified 24.4.03⁴</p>	<p>Low (as all parties involved are traceable reputable enterprises)</p>	<p>All employees are appropriately trained in health and safety for the construction of stoves and handling of construction products. They are not exposed to unsafe or unhealthy work environments. Proof of this will be provided with the PDD (letter from all our project partners)</p>
<p>The project takes a precautionary approach in regard to environmental challenges and is not complicit in practices contrary to the precautionary principle.</p>	<p>The project alleviates environmental challenges. It decreases unsustainable harvesting of wood from forests and the stove construction phase is conducted in a low impact manner. co2balance abides by the stipulations of the Tanzanian National</p>	<p>Low (all parties involved will not be significantly impacted by this principle)</p>	<p>There are no reasons to think the project could violate this principle, as proven in previous similar projects undertaken in other countries</p>

⁴ <http://www.cbd.int/doc/handbook/cbd-hb-07-en.pdf>

GOLD STANDARD PASSPORT

	Environment Management Council 2004 ⁵		
The project does not involve and is not complicit in significant conversion or degradation of critical natural habitats, including those that are (a) legally protected, (b) officially proposed for protection, (c) identified by authoritative sources for their high conservation value, or (d) recognized as protected by traditional local communities.	Tanzania is ratified to the Convention on biodiversity; Ratified 24.04.03 ⁶ . The nature of this project does not violate this principle. The project protects natural habitats by decreasing wood fuel harvesting from local forests.	Low (all parties involved will not be significantly impacted by this principle)	There are no reasons to think the project could violate this principle, as proven in previous similar projects undertaken in other countries
The project does not involve and is not complicit in corruption.	UN Convention against Corruption Ratification and Succession 25.05.05 ⁷ co2balance screens project participants for corruption. We proceed on all our project through formal and transparent methods	Negligible	There are no reasons to think the project could violate this principle, as proven in previous similar projects undertaken in other countries
Additional relevant critical issues for my project type	Description of relevance to my project	Assessment of relevance to my project (low, medium, high)	Mitigation measure
None			
etc...			

⁵ <http://www.nemctan.org/>

⁶ <http://www.cbd.int/doc/handbook/cbd-hb-07-en.pdf>

⁷ <http://www.unodc.org/unodc/en/treaties/CAC/signatories.html>

GOLD STANDARD PASSPORT

F.2. Sustainable Development matrix

Indicator	Mitigation measure	Relevance to achieving MDG	Chosen parameter and explanation	Preliminary score
Gold Standard indicators of sustainable development	If relevant, copy mitigation measure from 'Do No Harm' assessment, and include mitigation measure used to neutralise a score of '-'	Check www.undp.org/mdg and www.mdgmonitor.org Describe how your indicator is related to local MDG goals	Defined by project developer	<p><u>Negative impact:</u> score '-' in case negative impact is not fully mitigated, score '0' in case impact is planned to be fully mitigated</p> <p><u>No change in impact:</u> score '0'</p> <p><u>Positive impact:</u> score '+'</p>
Air quality	None Required	MDG's: Promote gender equality and empower women (3), Reduce child mortality (4), Improve maternal health (5), and Ensure environmental sustainability (7).	<p><i>Parameters: Total suspended particulate (TSPM)</i> <i>Respirable suspended particulate matter (RSPM)</i></p> <p>A reduction in non-renewable biomass fuel consumption will</p>	+

GOLD STANDARD PASSPORT

		<p>The improved stoves result in lower exposure levels and times to the selected parameters during cooking. This applies particularly to women and children who are most likely to be affected by this.</p> <p>Reduced fuel consumption also leads to increased land area cover by forest and reduced CO₂ emissions.</p> <p>Stoves are constructed from locally dug and produced clay bricks. 70% of the bricks are sun dried, however the 30% making up the firebox require use of local kiln firing facilities. Although this will produce some air pollution it is likely to be insignificant in relation to the reductions resulting from the stove use and so the indicator has been left as</p>	<p>result in lower levels of CO₂ emissions in the atmosphere and lower levels of TSPM and RSPM in the household environment.</p> <p>Parameter would also be measured through kitchen surveys by asking householders whether or not they noticed a significant change in Air Quality, so improving air quality.</p>	
--	--	--	---	--

GOLD STANDARD PASSPORT

		positive.		
Water quality and quantity	None required	<p>MDG: Ensure environmental sustainability (7)</p> <p>The reduction in wood required for cooking will reduce unsustainable harvesting of surrounding forests, contributing to environmental sustainability.</p>	<p><i>Parameter: Water quality and quantity</i></p> <p>It is expected that avoided deforestation will lead to reduced soil erosion and hence reduced pollution of local water courses. However, this indicator is difficult to measure so it scores a neutral zero.</p>	0
Soil condition	None required	<p>MDG: Ensure environmental sustainability (7)</p> <p>The reduction in wood required for cooking will reduce unsustainable harvesting of surrounding forests.</p>	<p><i>Parameter: Soil erosion and Organic matter content.</i></p> <p>The organic content of soil is a buffer against erosion. Reduced removal of wood will result in reduced soil erosion and an increase in soil organic matter. However, this indicator may prove difficult to measure and monitor so it scores a neutral zero.</p>	0

GOLD STANDARD PASSPORT

Other pollutants	None required	<p>MDG: Ensure environmental sustainability (7)</p> <p>There is no evidence to suggest that the project will be related to any other pollutants.</p>	<p><i>Parameter: none needed as score is neutral.</i></p> <p>There is no evidence to suggest that the project will relate to any other pollutants</p>	0
Biodiversity	None required	<p>MDG: Ensure environmental sustainability (7)</p> <p>It is assumed that the reduction in wood consumption will reduce pressures on existing habitats, leading to increased biodiversity.</p>	<p><i>Parameter: Number of affected habitats.</i></p> <p>Improved stoves will reduce the unsustainable harvesting of wood. Improved stoves will reduce fuel consumption as less firewood will be needed. This can indirectly lead to increased biodiversity as there will be less forest degradation. However, because this indicator is difficult to measure and monitor it scores a neutral zero.</p>	0
Quality of				

GOLD STANDARD PASSPORT

employment	None required	<p>MDG: End poverty & hunger.</p> <p>Employment and training opportunities resulting from stove construction and maintenance and project monitoring will provide income to people in the area.</p>	<p><i>Parameter: Number of workshops organised, content and attendees. Working conditions during the project.</i></p> <p>Number of contracts/ people employed through the different phases of the project, and any skills/training they will have received to enable them to perform their jobs: We have redesigned our training courses to include lessons on effective communication, dialogue, conflict resolution and group work. Equipping people with these skills increases their confidence, ability to complete tasks and enhances productivity.</p>	+
Livelihood of the poor	None required	<p>MDG's: Eradicate extreme poverty & hunger (1), Promote gender equality and empower</p>	<p><i>Parameter: Wood Consumption, Wood Cost and time spent for wood collection.</i></p>	+

GOLD STANDARD PASSPORT

		<p>women (3), Reduce child mortality (4), Improve maternal health (5), Combat HIV/AIDS, malaria and other diseases (6)</p> <p>The reduction in wood required for cooking will result in less expenditure on cooking fuel. This also reduces dependence on an increasingly scarce resource. Reduced smoke exposure will benefit women and children, who are most usually present during cooking. And finally, reduction in wood required for cooking will result as well in time saving on cooking fuel collection.</p>	<p>Through comparing the reduction in wood per household to the cost of wood it will be possible to calculate financial savings made by households. The saving on time spent for wood collection will be also measured and compared to the baseline.</p>	
Access to affordable and clean energy services	None required	<p>MDG: Eradicate extreme poverty & hunger (1)</p> <p>The reduction in firewood</p>	<p><i>Parameter: Change in volume of Traditional Fuel through wood consumption, wood cost and time spent for wood collection</i></p>	+

GOLD STANDARD PASSPORT

		required will result in lower expenditure on energy	By measuring the direct parameters, we will prove the benefits from the project as it relates to more affordable energy (reduction in wood per household).	
Human and institutional capacity	None required	<p>MDG: Promote gender equality and women empowerment (3).</p> <p>The project will bring numerous benefits to women as there are in charge of the cooking tasks</p>	<p><i>Parameter: Household income generated from employment created by the project,</i></p> <p><i>Parameter: Change in female earned income, Change in number of jobs and positions for women, Women in decision making groups at the community level.</i></p> <p>There will be new employment opportunities for both men and women will be created by the project. Local women will be employed throughout different phases of the project primarily as data collectors and community engagement</p>	+

GOLD STANDARD PASSPORT

			officers. Employment positions will be monitored through employment records.	
Quantitative employment and income generation	We will seek to employ those individuals, (fuel sellers etc), that are likely to have their income affected will be employed for the duration of the project. As a result we have given this a neutral score	MDG: End poverty & hunger (1). The project will create jobs and generate income for those involved in stove production, distribution, installation, maintenance and project sampling.	<p><i>Parameter: Household income generated from employment created by the project using internal records.</i></p> <p>Wood sellers will see their business affected as less input will be needed to cook the same food. However, a number of new job opportunities for both men and women will be created by the project. The quality and content of our new training sessions encourages participation, capacity building, personal and group development. A by-product of more confident and efficient individuals is a more efficient and productive group, community and project.</p>	0

GOLD STANDARD PASSPORT

			Approximately 35 people will be directly employed for the project (95% will be locals). The roles will involve data collection, data entry, stove manufacturers and local mediators. Fuel sellers would be trained in stove construction; this would be reflected in employment records.	
Balance of payments and investment	None required	<p>MDG: Develop a global partnership for development (6)</p> <p>It is not anticipated that the project will have any impact balance of payments and investment.</p>	<p><i>Parameter: none needed as score is neutral.</i></p> <p>It is not anticipated that the project will have any impact balance of payments and investment.</p>	0
Technology transfer and technological self-reliance	None required	<p>Eradicate extreme poverty & hunger (1), Ensure environmental sustainability (7)</p> <p>The project will bring the</p>	<p><i>Parameter to measure indicator: Number of participants that attend capacity building activities.</i></p> <p>Educational training will be</p>	0

GOLD STANDARD PASSPORT

		wood efficient stove technology to the area, as well as new skills through capacity building.	provided for those directly employed with the project. Because this is only limited to stove builders we have given this a neutral score.	
--	--	---	---	--

SECTION G. Sustainability Monitoring Plan

[See Toolkit 2.4.3 and Toolkit Annex I]

No	1
Indicator	Air Quality
Mitigation measure	None
<i>Repeat for each parameter</i>	

GOLD STANDARD PASSPORT

Chosen parameter 1.1		Total suspended particulate matter (TSPM) – measured indirectly by wood consumption
Current situation of parameter		As determined by research (see table above) and field staff, traditional cooking methods produce large amounts of TSPM. It is not justifiable to measure this quantitatively but it will be measured qualitatively as described below.
Estimation of baseline situation of parameter		The baseline is determined by the current situation.
Future target for parameter		The project aims to reduce wood consumption and hence make a reduction in the defined parameter.
Way of monitoring	How	Kitchen Performance Tests & Annual Surveys
	When	Biennially and annually, respectively
	By who	Expert surveying team
Chosen parameter 1.2		Respirable suspended particulate matter (RSPM) – measured indirectly by wood consumption
Current situation of parameter		As determined by research (see table above) and field staff, traditional cooking methods produce large amounts of RSPM. It is not justifiable to measure this quantitatively but it will be measured qualitatively as described below.
Estimation of baseline situation of parameter		The baseline is determined by the current situation.
Future target for parameter		The project aims to reduce wood consumption and hence make a reduction in the defined parameter.
Way of monitoring	How	Kitchen Performance Tests & Annual Surveys
	When	Biennially and annually, respectively
	By who	Expert surveying team
No		2
Indicator		Quality of employment
Mitigation measure		None
<i>Repeat for each parameter</i>		
Chosen parameter 2.1		Number of training workshops organised, number of attendees.

GOLD STANDARD PASSPORT

Current situation of parameter		3
Estimation of baseline situation of parameter		As defined by current situation.
Future target for parameter		3
Way of monitoring	How	Stove contractor records – collated
	When	Continuously
	By who	Project developer

No		3
Indicator		Livelihood of the poor
Mitigation measure		None
<i>Repeat for each parameter</i>		
Chosen parameter		Wood consumption
Current situation of parameter		Wood consumption is known to be high amongst the project area population
Estimation of baseline situation of parameter		As defined by current situation
Future target for parameter		It is anticipated that wood consumption amongst stove beneficiaries will be reduced by at least 50%
Way of monitoring	How	Kitchen Performance Tests & Annual Surveys
	When	Biennially and annually, respectively
	By who	Expert surveying team

No		4
Indicator		Access to affordable and clean energy services
Mitigation measure		None
<i>Repeat for each parameter</i>		
Chosen parameter		Change in volume of traditional fuel consumption
Current situation of parameter		Traditional fuel consumption (wood) is known to be high amongst the project area population

GOLD STANDARD PASSPORT

Estimation of baseline situation of parameter		As defined by current situation
Future target for parameter		It is anticipated that wood consumption amongst stove beneficiaries will be reduced by at least 50%
Way of monitoring	How	Kitchen Performance Tests & Annual Surveys
	When	Biennially and annually, respectively
	By who	Expert surveying team

No	5	
Indicator	Human and Institutional Capacity	
Mitigation measure	None	
<i>Repeat for each parameter</i>		
Chosen parameter	Change in number of jobs and positions for women, Women in decision making groups at the community level.	
Current situation of parameter	9	
Estimation of baseline situation of parameter	As defined by current situation	
Future target for parameter	18	
Way of monitoring	How	Employment Records
	When	Continuously
	By who	Project developer

GOLD STANDARD PASSPORT

Additional remarks monitoring

SECTION H. Additionality and conservativeness



This section is only applicable if the section on additionality and/or your choice of baseline does not follow Gold Standard guidance

GOLD STANDARD PASSPORT

H.1. Additionality

[See Toolkit 2.3]

Both the additionality and choice of the baseline follow GS guidance

GOLD STANDARD PASSPORT

H.2. Conservativeness

[See Toolkit 2.2]

GOLD STANDARD PASSPORT

ANNEX 1 ODA declaration



1 Discovery House, Cook Way, Bindon Road,
Taunton, Somerset, TA2 6BJ
t +44 (0)845 094 2620
f +44 (0)1823 336 776
enquiries@co2balance.com
www.co2balance.com

Date: 16/09/2011
Project reference: GS1045
To: Gold Standard Foundation

Declaration of Non-Use of Official Development Assistance by Project Owner

As Project Owner of the above-referenced project, acting on behalf of all project participants, I now make the following representations:

I. Gold Standard Documentation

I am familiar with the provisions of Gold Standard Documentation relevant to Official Development Assistance (ODA). I understand that the above-referenced project is not eligible for Gold Standard registration if the project receives or benefits from Official Development Assistance under the condition that some or all credits coming out of the project are transferred to the ODA donor country. I now expressly declare that no financing provided in connection with the above-referenced project has come from or will come from ODA that has been or will be provided under the condition, whether express or implied, that any or all of the credits [CERs, ERUs or VERs] issued as a result of the project's operation will be transferred directly or indirectly to the country of origin of the ODA.

GOLD STANDARD PASSPORT

II. Duty to Notify Upon Discovery.

If I learn or if I am given any reason to believe at any stage of project design or implementation that ODA has been used to support the development or implementation of the project, or that an entity providing ODA to the host country may at some point in the future benefit directly or indirectly from the credits generated from the project as a condition of investment, I will make this known to the Gold Standard immediately.

III. Sanctions.

I am fully aware that under Section 10 of the Gold Standard Terms and Conditions sanctions and damages may be incurred for the provision of false information related to Projects and/or Gold Standard credits.

Signed: 

Name: Suzanne Longworth

Title: Director

On behalf of: co2balance